



 **FITZPATRICK**  
PERFORMANCE METAL DOORSETS

Prefab  
Partition system



## ABOUT US

---



For more than 80 years, Fitzpatrick in the UK manufactured and supplied the market with fire-rated metal doors for commercial, industrial, and special building applications throughout the world.

Since 2000, Fitzpatrick has comprised of a management team with a wealth of experience in the field and established a manufacturing facility to produce fire-resistant doors, acoustic doors, security doors, ballistic doors, fire-resistant rolling shutters, and steel sliding doors. Later on, Fitzpatrick expanded its capabilities and experience to add to its range of products: fire-rated glazed partitions, linen chutes, garbage chutes, and fire curtains that are compliant with British Standards, American Standards, and European Standards.

Offering design, manufacture, and installation services with ISO 9001, ISO 14001, and OHSAS 18001 certified manufacturing plants; Fitzpatrick uses modern manufacturing techniques and adopts high quality standards for production planning in a way to have the flexibility to execute projects of all types and sizes.

Continuous product development and an exhaustive performance testing program are enabling Fitzpatrick to offer a wide range of certified door assemblies. Over the years, Fitzpatrick has developed many innovative product ranges for specific market sectors including malls, high-rise buildings, educational facilities, health care, and leisure projects.

Fitzpatrick partitions are most commonly used to divide workspaces, add an office space to a warehouse, or install secure storage or workshop spaces. Steel partitions often compliment new building renovations while offering an affordable, flexible, and hassle-free space solution when compared to construction.



**100%**

**ECO-FRIENDLY**

**100%**

**DEMOUNTABLE**

**48dB**

**SOUND  
INSULATION**

Fitzpatrick partitions are the most economical and flexible of the partition systems as they require little to no setup time and can be adjusted with ease. They create multiple versatile spaces within a larger open space.

01.



### 1. DOUBLE GLASS

Glass wall systems open up the workspace by bringing in more light and optimizing the layout with hybrid private and public workspaces.

02.



### 2. DOUBLE GLASS WITH BLINDS

Glass can be custom-equipped with built-in horizontal metal blinds, with manual or electric dimming, which give users privacy on-demand.

03.



### 3. DOUBLE BACK PAINTED GLASS

Add depth to your space with painted backdrops which can double as dry-erase marker boards for team brainstorm sessions and collaboration.

Modular partitions are the most economical and flexible of the partition systems as they require little to no setup time and can be adjusted with ease. They create multiple versatile spaces within a larger open space.



#### **4. DOUBLE STEEL PANEL**

Double steel panels offer the best in soundproofing, and durability, especially when supported with plasterboard.

Moreover, steel panels are fully customizable as they can be covered with a wide array of fabrics and leathers.

# TECHNICAL SPECIFICATIONS

Steel partitions are most commonly used to divide workspaces, add an office space to a warehouse, or install secure storage or workshop spaces. Steel partitions often compliment new building renovations while offering an affordable, flexible, and hassle-free space solution when compared to construction.

## Profile

Upright Pillar: Steel Section  
Ceiling and Floor U-channels: 1mm  
Galvanized steel Section

## Solid panel

1mm galvanized steel panel with plasterboard backing or honeycomb  
15mm melamine finished particleboard panels  
15mm Veneer finished particleboard panels  
Fabric covered steel or particleboard panels  
50kgs/80kgs/m<sup>3</sup> rock wool between two  
Paneling.

## Glass panel

Double glazed panels in 6 or 8 mm thickness in monoblock or bi-block aluminum sections, with beading or flush glass  
Glass options: tempered glass, laminated glass.

## Standard dimension

Wall Thickness: 100mm  
Height: 3500mm  
Width: Solid panel 900/1000/1100mm,  
Glass 900/1000/1100mm/1200mm  
Other sizes in height or width after  
Consultation Weight: 35/48Kgs/m<sup>2</sup>

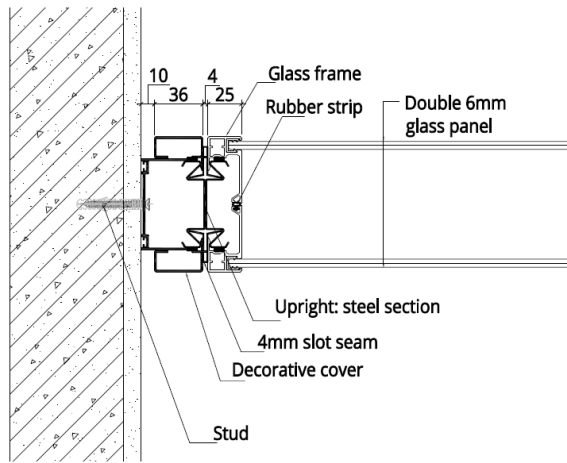
## Finishes

Surface Treatments: Metal panel in powder coating approx. 60µm thickness/PVC Treatment 0.08mm  
Colors: As per Fitzpatrick's color chat. Other colours possible after consultation.  
Glazing: Various of options is available, such as sandblasting, film, painted glass, smart glass.

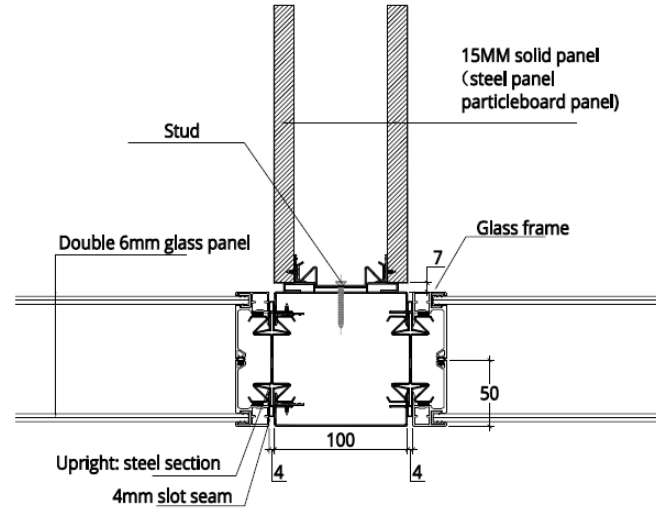
## Acoustic

Standard ISO717  
Solid panel: metal panel : Rw=50dB  
Solid Panel: Chipboard Panel: Rw=46dB  
Glass Panel: from 41dB to 48db

# CONSTRUCTION DETAILS

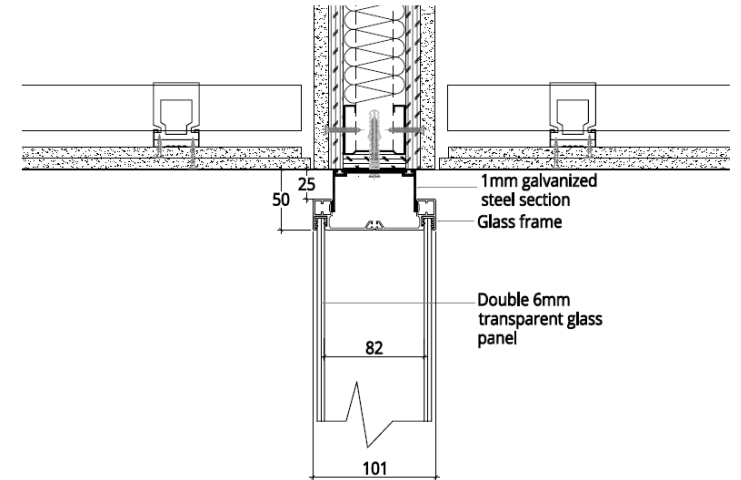


**WALL DETAIL**

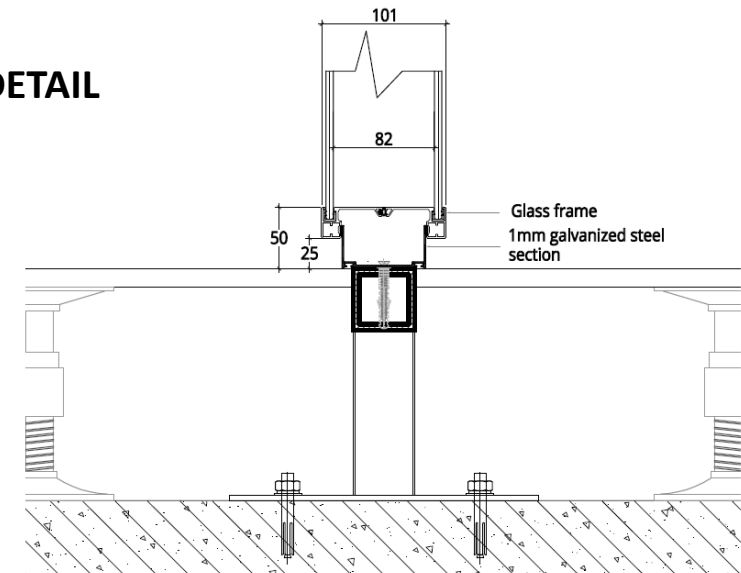


**CONNECTION DETAIL**

## CEILING DETAIL



## FLOOR DETAIL



## COLOR OPTIONS

Choose from a wide range of colors to match company colors, add depth to the space or discreetly blend in with existing infrastructure.

### Pure color



APS-08



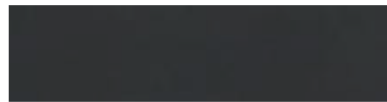
APS-18



APS-28



APS-08



APS-18



APS-28

### PVC surface



APS-08



APS-18



APS-28



APS-08



APS-18



APS-28



Colors above are for reference only. Printed colors may differ, please consult the actual products.





Ain Saadeh (Industrial city) - Meker Building - Matn District - Lebanon

Phone: +961 1 901 888

Mobile: +961 3 232 444

Fax: +961 1 901 333

[enquiries@fitzpatrickmetaldors.co.uk](mailto:enquiries@fitzpatrickmetaldors.co.uk)

Copyright © Fitzpatrick Doors LTD (UK) & Fitzpatrick SAL (LEB)- All Rights Reserved.

