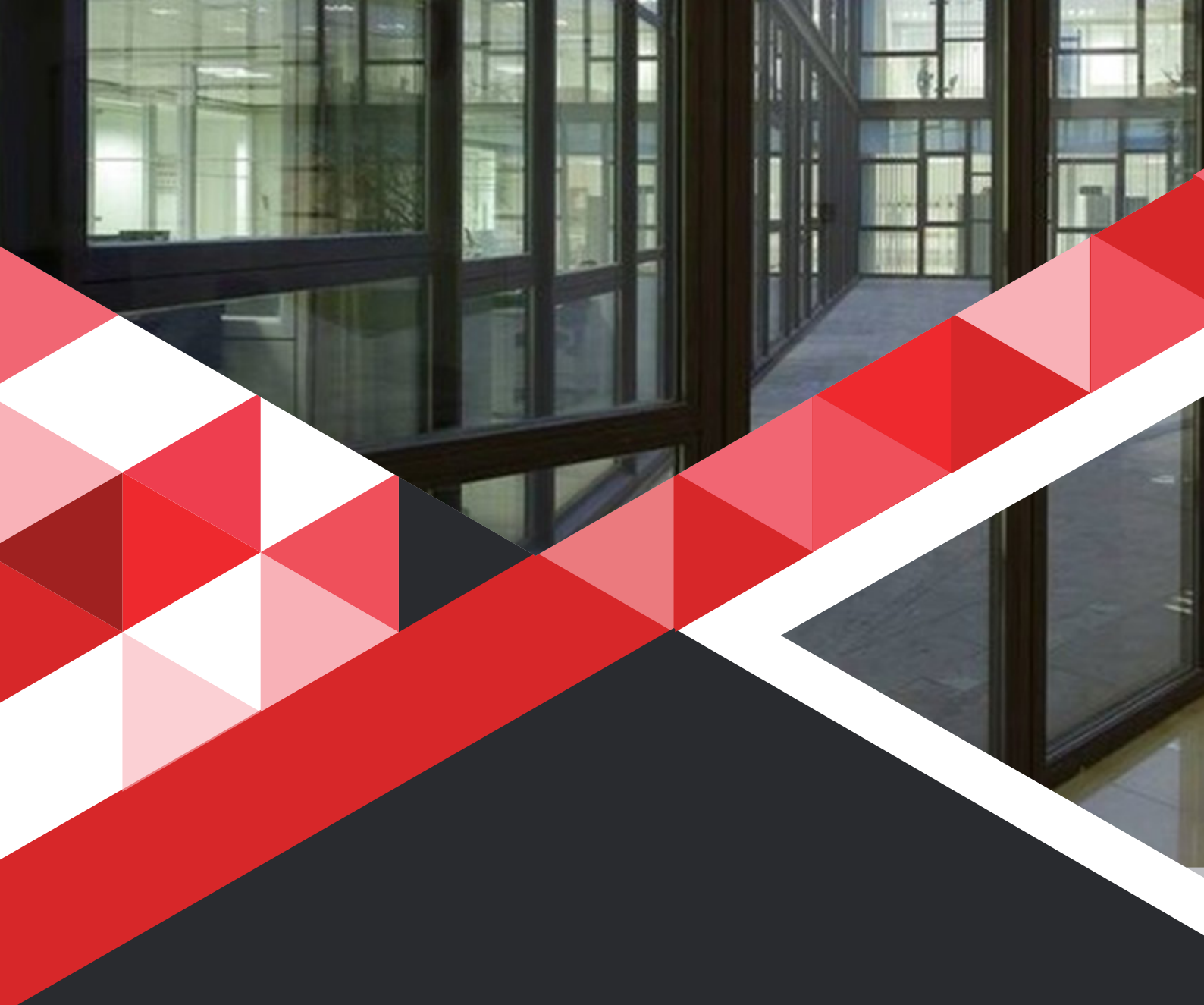




FIRE RATED GLAZED PARTITIONS

WWW.FITZPATRICKMETALDOORS.CO.UK



ABOUT US

For more than 80 years, Fitzpatrick in the UK manufactured and supplied the market with fire-rated metal doors for commercial, industrial, and special building applications throughout the world.

Since 2000, Fitzpatrick has comprised of a management team with a wealth of experience in the field and established a manufacturing facility to produce fire-resistant doors, acoustic doors, security doors, ballistic doors, fire-resistant rolling shutters, and steel sliding doors. Later on, Fitzpatrick expanded its capabilities and experience to add to its range of products: fire-rated glazed partitions, linen chutes, garbage chutes, and fire curtains that are compliant with British Standards, American Standards, and European Standards.



ISO 9001 - ISO 45001
ISO 14001



Offering design, manufacture, and installation services with ISO 9001, ISO 14001, and OHSAS 18001 certified manufacturing plants; Fitzpatrick uses modern manufacturing techniques and adopts high quality standards for production planning in a way to have the flexibility to execute projects of all types and sizes. Continuous product development and an exhaustive performance testing program are enabling Fitzpatrick to offer a wide range of certified door assemblies. Over the years, Fitzpatrick has developed many innovative product ranges for specific market sectors including malls, high-rise buildings, educational facilities, health care, and leisure projects.

APPLICATION

Fire glass solutions enable the achievement of beautiful, safe, and secure living and working spaces.

While transparency is assured, the systems are designed to prevent the passage of fire, smoke, and radiation.

- ✓ Facades
- ✓ Lobbies
- ✓ Skylights
- ✓ Doors
- ✓ Lift glazing
- ✓ Partition walls
- ✓ Staircases
- ✓ Roof lights
- ✓ Roofs
- ✓ Smoke Screens
- ✓ Curtain wall

FIRE RATING

A fire-resistance rating typically means the duration for which a passive fire protection system can withstand a standard fire resistance test.

This can simply be quantified as a measure of time.

The rating is in two categories depending on the standard.



RATING AS PER EN (European Norms)

E - Integrity:

Offers effective and economical protection from flames and smoke, but does not prevent the transmission of heat in the event of a fire.



EW - Integrity & Radiation:

Reduces the amount of radiant heat transfer to below 15 kW/m² on the unexposed side.

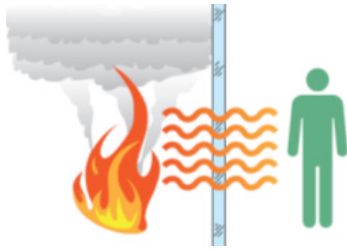


EI - Integrity & Insulation:

Is the highest level of protection from flames, smoke, and heat.

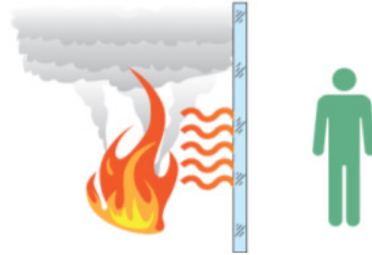


RATING AS PER UL (AMERICAN STANDARD)



Fire Protection Rated:

Glazing defends against the spread of flames and smoke. It holds glass integrity with hose stream test.



Fire Resistance Rated:

Glazing provides the same defence as Fire Protection rating and adds further protection by blocking the transfer of radiant and conductive heat.

PROFILES AS PER EN/BS STANDARD (1 OF 2)

Our range of doors and partition systems offers complete coverage providing fire rating E/EW/EI 30, 60, 90 and 120 minutes. The profiles can be supplied in galvanized painted steel and brushed finish stainless steel.



Type	EBE AF	SA AF	4F AF
Fire Rating	EI 30	E 30	EI 30
	EI 60	EW 60	EI 60
	EI 90	EW 90	EI 90

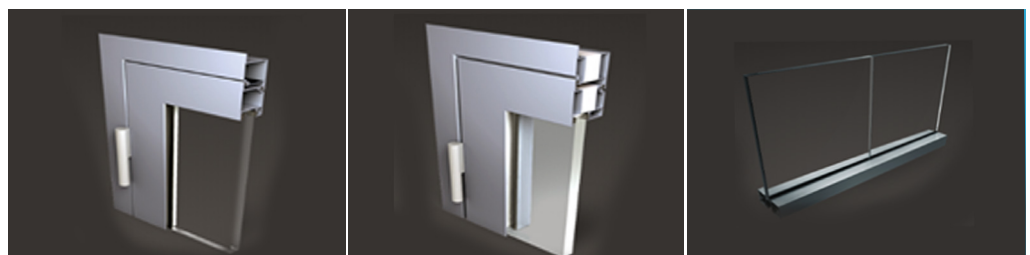
PROFILES as per EN/BS Standard (2 of 2)



Type	RP-hermetic 55N FP	RP-ISO-hermetic 70 FP	RP-ISO-hermetic EI	RP-ISO-hermetic 45N/60N
Fire Rating	EW 30	EI 30	EI 30	EI 30
	EW 60	EI 60	EI 60	EI 60
	EW 90	EI 90	EI 90	EI 90
	EW 120		EI 120	EI 120

PROFILES as per UL (1 of 2)

Our range of doors and partition systems offers complete coverage providing fire rating Fire Protection and Fire Resistance 20/45/60/90 minutes. The profiles can be supplied in galvanized painted steel and brushed finish stainless steel.



Type	Designer Series	Heat Barrier Series	Clear view system
Fire Rating	Fire Protection 20/45/60/90 Fire Resistance 60/90	Fire Resistance 60/90/120	Fire Resistance 60/120

PROFILES as per UL (2 of 2)

			
Type	Aluminum Series	Curtain Wall Series	SG Curtain Wall Series
Fire Rating	Fire Protection 45 Fire Resistance 60/120	Fire Protection 45 Fire Resistance 60/120	Fire Protection 45 Fire Resistance 60/120

GLASS

We offer fire-rated products from the world's leading glass manufacturer.

Depending on fire rating and standard, we can offer:

For EN/BS standard:

- E/EW classification, a range of toughened fire rated glass that provides integrity and radiant heat protection for 30 to 120 minutes. A lightweight and UV stable solution with exceptional light transmission.
- EI classification, a range of toughened fire rated glass which provides integrity and heat insulation for 30 to 180 minutes. The solution provides 1B1 impact classification, high performing acoustic properties and UV stability.

For UL standard:

- Fire Protection classification, Ceramic glass Impact safety-rated with high performance surface-applied approved fire-rated film that Withstands thermal shock and Hose Stream Test. Fire-rated for up to 180 minutes. Impact safety-rated-meets ANSI Z97.1 and CPSC 16 CFR1201 (Cat. I and II).
- Fire Resistance classification, fire-rated and impact safety-rated glazing material that blocks radiant heat, protecting people and valuables on the non-fire side of the glass. Fire-rated for up to 120 minutes with required hose stream test, and impact safety-rated-meets ANSI Z97.1 and CPSC 16 CFR1201 (Cat. I and II).

PROFILES & GLASS COMBINATION

As per the requirements, the profiles and glass combinations can provide fire protection according to the applicable standards.





TESTING

Glass partitions earn fire ratings through rigorous testing processes at independent laboratories such as UL, Efectis, Exova Warrington, etc.

Our constructions are tested as to meet the European Standards (EN 1363-1, EN 1364-1, EN 1634-1), British Standard (BS476: Part 22: 1987), and American Standards (UL 9, UL 10B, UL 10C, ASTM E2074, NFPA 80, NFPA 252, NFPA 257).

EXECUTED PROJECTS

Some of our executed projects:



From <https://www.argaam.com/en/article/articledetail/id/580976>

DALLAH HOSPITAL WEST EXPANSION

KSA



From Wikimedia Commons

ABDALI BOULEVARD

JORDAN



From <https://www.pinterest.com/pin/300474606360942520/>

WATERFRONT DBAYEH

LEBANON



From <https://www.skyscrapercity.com/threads/al-hoceima-centre-hospitalier-provincial-250-lits-374-mdh-uc.1396022/>

HOUCEIMA CHP

MOROCCO



From Facebook

LEBANESE UNIVERSITY NC

LEBANON



From <http://wikimapia.org>

CMA-CCM HQ

LEBANON



From <https://www.behance.net/gallery/29158651/Credit-Libanais>
(Owner Imad Elkhoury)

BANK CREDIT LIBANAIS HQ

LEBANON



From <https://www.sobeirut.com/events/935/lebanese-national-library-exhibition-tour>

NATIONAL LIBRARY

LEBANON

Fitzpatrick...

Your partner for glazed
fire rated safety barrier



CONTACT US



Ain Saadeh (Industrial city) - Meker Building - Matn District - Lebanon



Phone: +9611 901 888
Mobile: +961 3 232 444
Fax: +9611 901 333



enquiries@fitzpatrickmetaldors.co.uk

